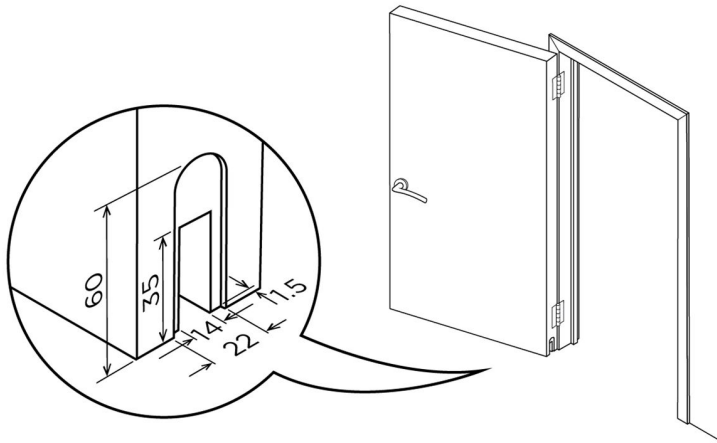
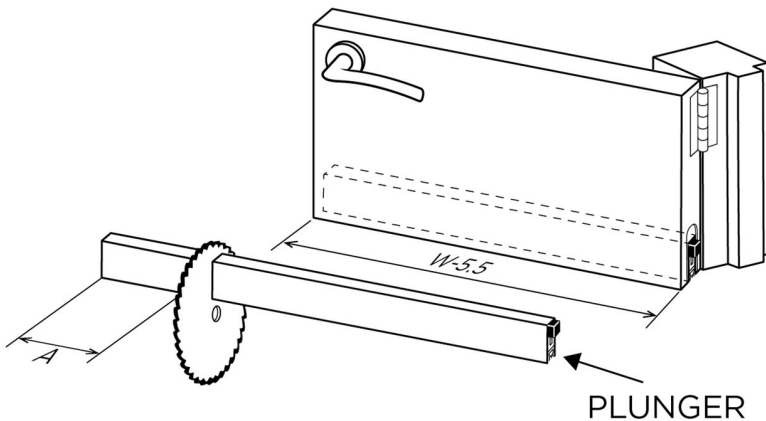


Concealex A8100 Superior Fitting Instructions



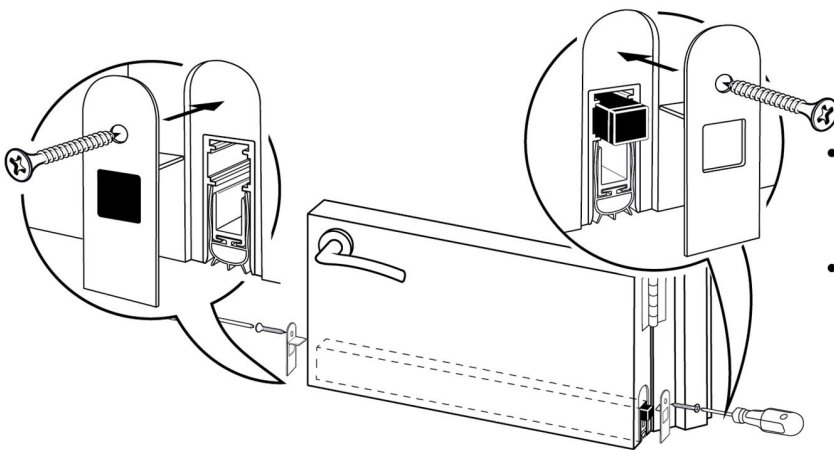
Step 1

- Machine a slot in the bottom of the door measuring 14mm wide x 35mm deep.
- Machine the bottom edge of door 1.5mm deep x 22mm wide x 60mm high to accept endplate.



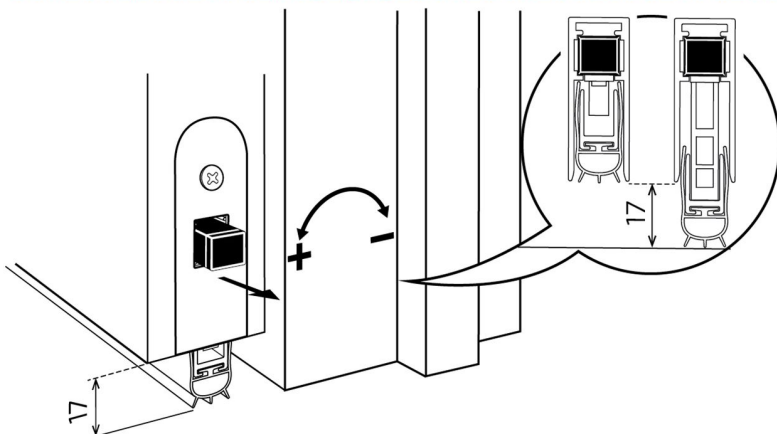
Step 2

- Measure Total door width (W).
- Deduct 5.5mm from the door width (W - 5.5mm).
- Cut Concealex profile length (W-5.5mm) **ensuring the cut is from the opposite end to the plunger (A).** *



Step 3

- Locate Concealex into routed slot ensuring plunger is on hinge side of door.
- Fit endplates onto each end of the Concealex and screw into place.



Step 4

- Make adjustments to suit under door gap.

*Note: If purchased length is less than 430mm the max cut can be 50mm (A = 50mm)
If purchased length is greater than 430mm then the max cut can be 150mm (A= 150mm)