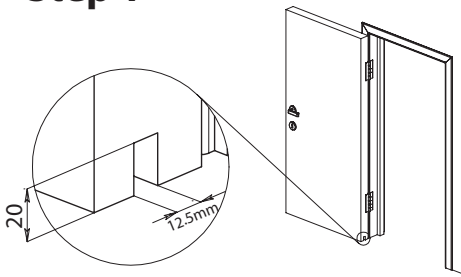
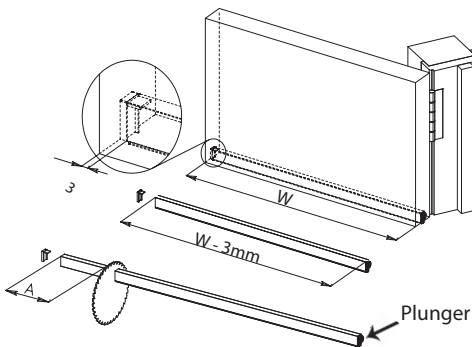


Step 1



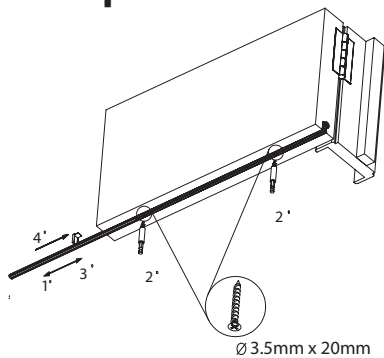
- Machine a slot in the bottom of the door measuring 12.5mm wide x 20mm deep.

Step 2



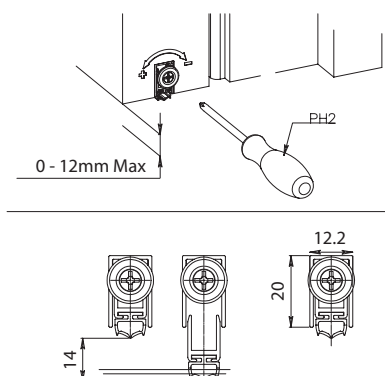
- Measure Total door width (W).
- Deduct 3mm from the door width ($W - 3\text{mm}$).
- Cut Concealex profile length ($W - 3\text{mm}$) ensuring the cut is from the opposite end to the plunger (A). *

Step 3



- Remove the internal mechanism (pull the plunger).
- Screw Concealex to the bottom of the door ensuring plunger is on hinge side.
- Re-install internal mechanism.
- Fit the provided endcap as indicated.

Step 4



- Adjust to suit under door gap using a Phillips screwdriver (PH2)

*Note: If purchased length is less than 430mm the max cut can be 50mm (A = 50mm)
If purchased length is greater than 430mm then the max cut can be 150mm (A= 150mm)